

**NOTES:**

Figured dimensions only to be taken from this drawing.

All dimensions to be checked on site.

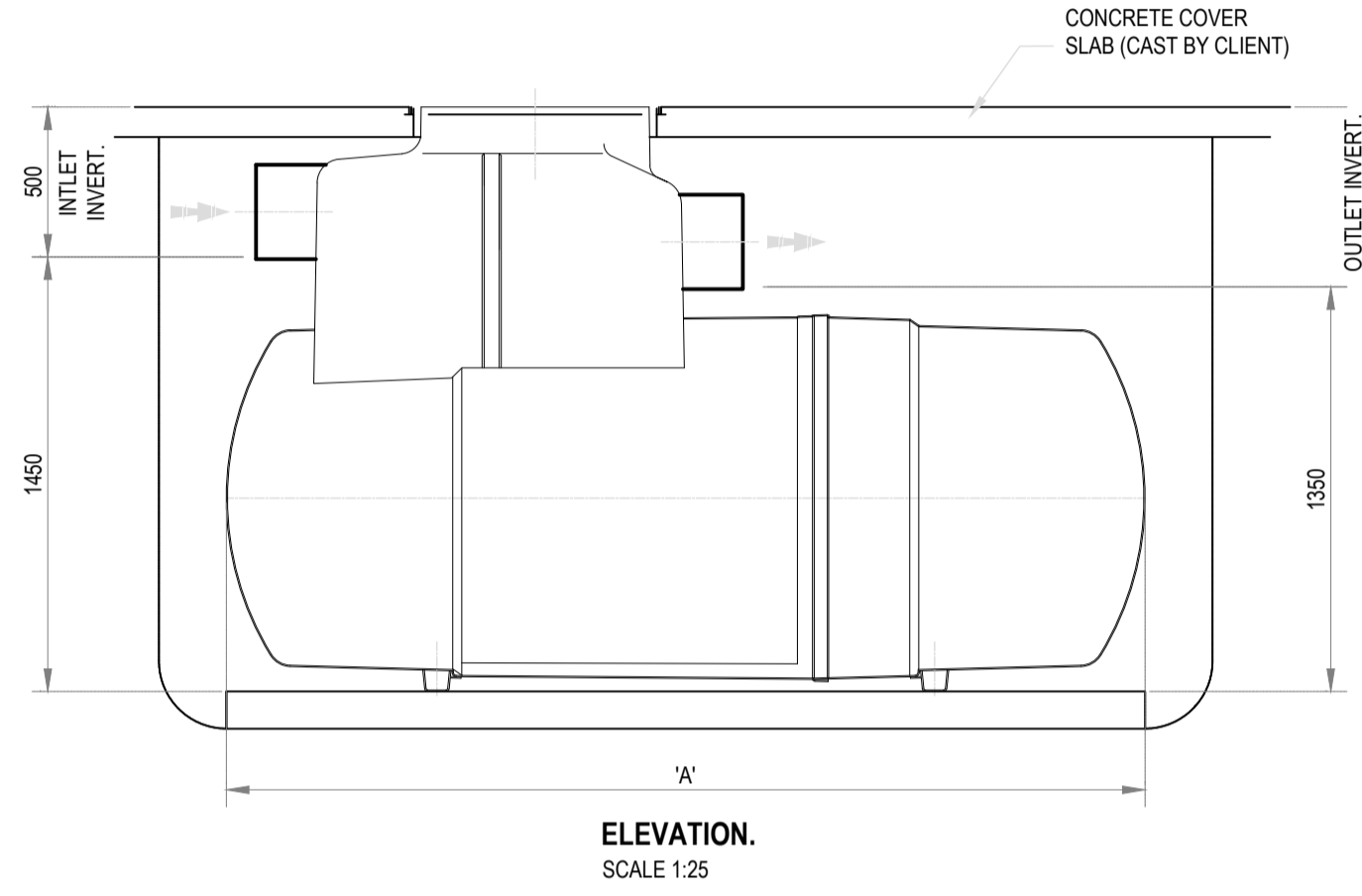
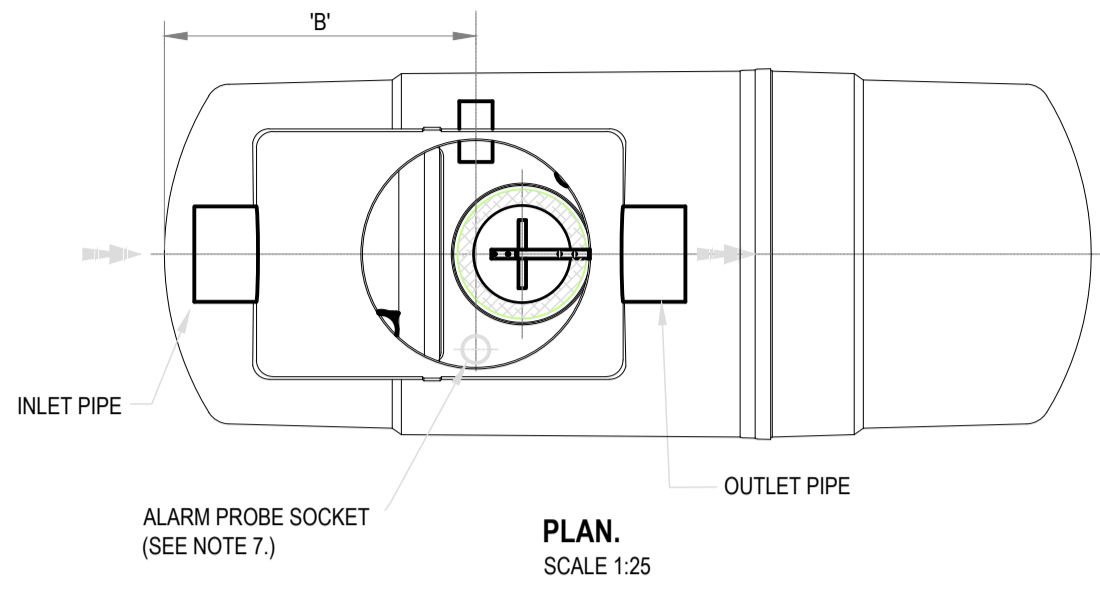
All levels are in metres O.D. and are related to Ordnance datum at Malin

Refer to relevant Architects drawings for location of buildings and associated car parking

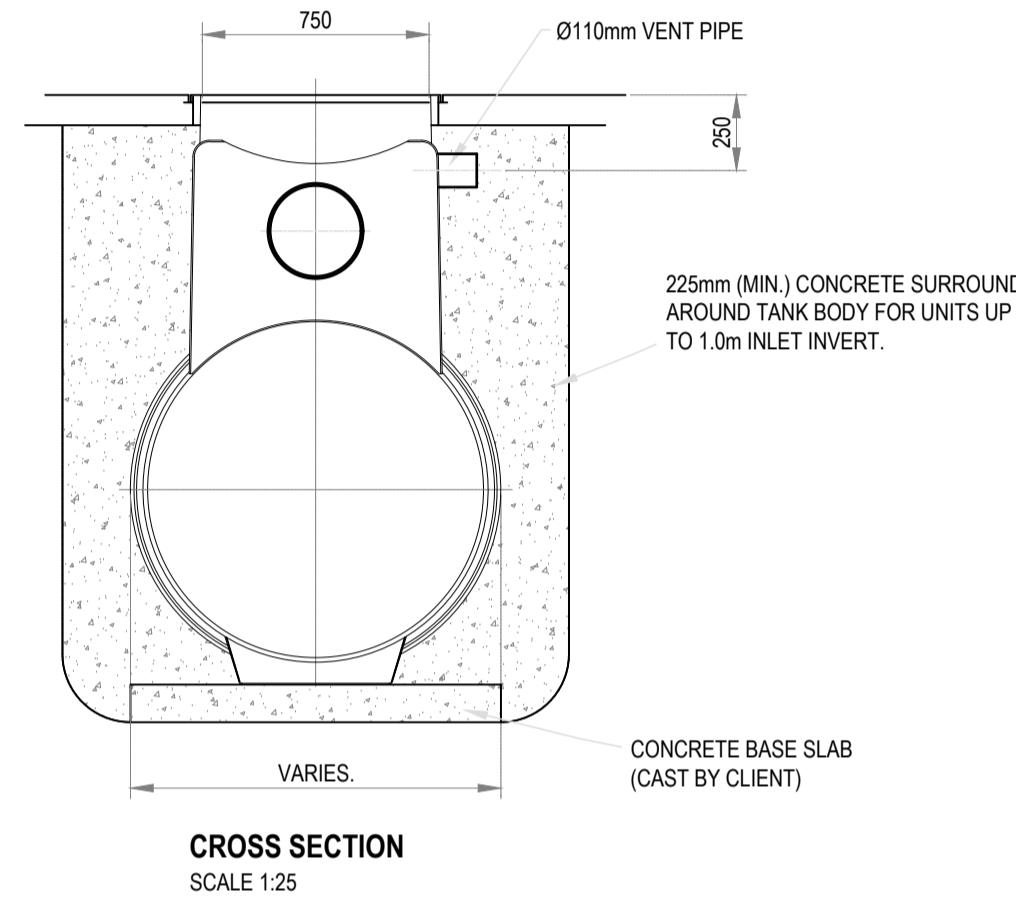
For location of SUDS DEVICES refer to Drg. No. Y19205-JBB-00-XX-DR-C-002

**KLARGESTER CLASS 1 BYPASS SEPARATOR DIMENSION SCHEDULE.**

| Unit Nominal Size | Flow (l/s) | Peak Flow Rate (l/s) | Drainage Area (m <sup>2</sup> ) | Storage Capacity (litres) |      | Unit Length (mm) 'A' | Unit Dia (mm) 'B' | Access Shaft Diameter (mm) | Base to Inlet Invert (mm) | Base to Outlet Invert (mm) | Standard Fall Across Unit | Min. Inlet Invert (mm) | Standard Pipework Diameter (mm) |
|-------------------|------------|----------------------|---------------------------------|---------------------------|------|----------------------|-------------------|----------------------------|---------------------------|----------------------------|---------------------------|------------------------|---------------------------------|
|                   |            |                      |                                 | Silt                      | Oil  |                      |                   |                            |                           |                            |                           |                        |                                 |
| NSBP003           | 3          | 30                   | 1670                            | 300                       | 45   | 1700                 | 1350              | 600                        | 1420                      | 1320                       | 100                       | 500                    | 315                             |
| NSBP004           | 4.5        | 45                   | 2500                            | 450                       | 68   | 1700                 | 1350              | 600                        | 1420                      | 1320                       | 100                       | 500                    | 315                             |
| NSBP006           | 6          | 60                   | 3335                            | 600                       | 90   | 1700                 | 1350              | 600                        | 1420                      | 1320                       | 100                       | 500                    | 315                             |
| NSBP008           | 8          | 80                   | 4445                            | 800                       | 120  | 3065                 | 1225              | 750                        | 1450                      | 1350                       | 100                       | 500                    | 315                             |
| NSBP010           | 10         | 100                  | 5560                            | 1000                      | 150  | 3065                 | 1225              | 750                        | 1450                      | 1350                       | 100                       | 500                    | 315                             |
| NSBP012           | 12         | 120                  | 6670                            | 1200                      | 180  | 3915                 | 1225              | 750                        | 1450                      | 1350                       | 100                       | 500                    | 315                             |
| NSBP015           | 15         | 150                  | 8335                            | 1500                      | 225  | 3915                 | 1225              | 750                        | 1450                      | 1350                       | 100                       | 500                    | 315                             |
| NSBP018           | 18         | 180                  | 10000                           | 1800                      | 270  | 3200                 | 2012              | 600                        | 2110                      | 2010                       | 100                       | 1000                   | 375                             |
| NSBP024           | 24         | 240                  | 13340                           | 2400                      | 360  | 3200                 | 2012              | 600                        | 2110                      | 2010                       | 100                       | 1000                   | 375                             |
| NSBP030           | 30         | 300                  | 16670                           | 3000                      | 450  | 3915                 | 2012              | 600                        | 2110                      | 2010                       | 100                       | 1000                   | 450                             |
| NSBP036           | 36         | 360                  | 20000                           | 3600                      | 540  | 3915                 | 2012              | 600                        | 2110                      | 2010                       | 100                       | 1000                   | 525                             |
| NSBP055           | 55         | 550                  | 30560                           | 5500                      | 825  | 5085                 | 2820              | 600                        | 2310                      | 2060                       | 250                       | 1000                   | 750                             |
| NSBP072           | 72         | 720                  | 40000                           | 7200                      | 1080 | 5820                 | 2820              | 600                        | 2310                      | 2060                       | 250                       | 1500                   | 750                             |
| NSBP084           | 84         | 840                  | 46670                           | 8400                      | 1260 | 6200                 | 2820              | 600                        | 2310                      | 2010                       | 300                       | 1500                   | 750                             |
| NSBP096           | 96         | 960                  | 53340                           | 9600                      | 1440 | 7375                 | 2820              | 600                        | 2310                      | 2010                       | 300                       | 1500                   | 825                             |
| NSBP110           | 110        | 1100                 | 61110                           | 11000                     | 1650 | 7925                 | 2820              | 600                        | 2360                      | 2010                       | 350                       | 1500                   | 825                             |
| NSBP130           | 130        | 1300                 | 72225                           | 13000                     | 1950 | 8725                 | 2820              | 600                        | 2360                      | 2010                       | 350                       | 1500                   | 825                             |



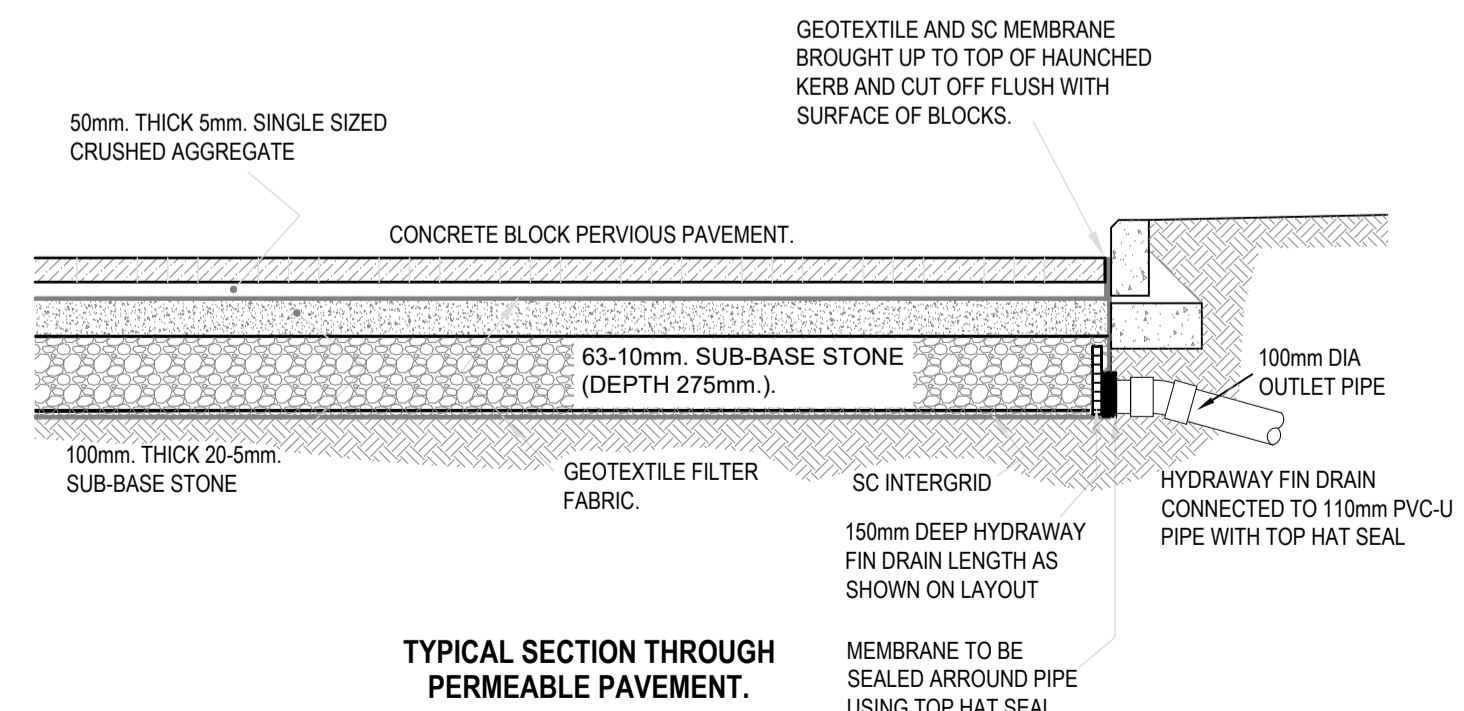
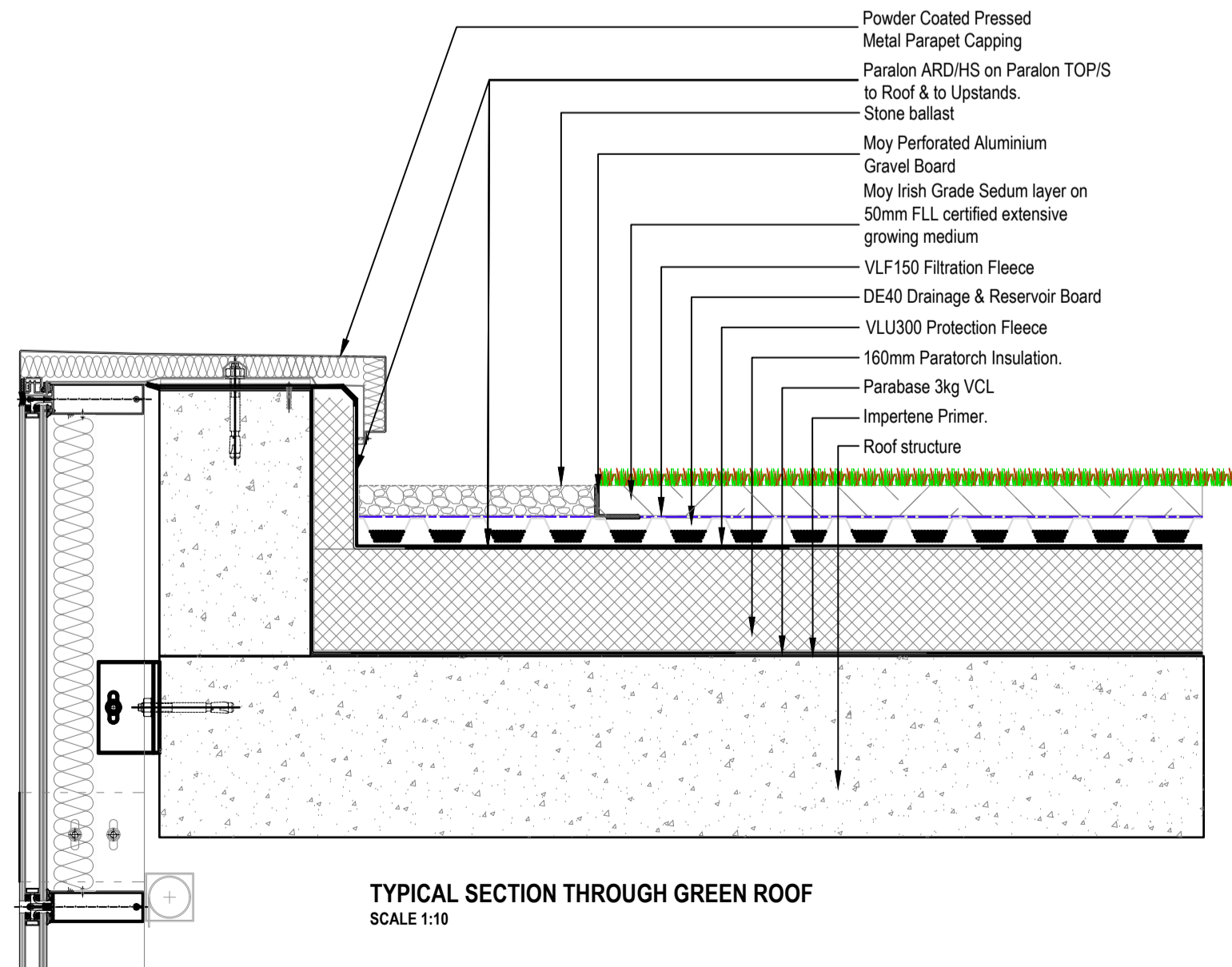
**KLARGESTER CLASS 1 BYPASS SEPARATOR DETAILS.**



**KLARGESTER CLASS 1 BYPASS SEPARATOR DETAILS.**

**BYPASS SEPARATOR NOTES :**

- 1.) INLET / OUTLET PIPES ARE PLAIN PVCu.
- 2.) PLEASE NOTE A CLASS 1 BYPASS SEPARATOR INCLUDES A COALESCER. CLASS 2 BYPASS SEPARATORS DO NOT.
- 3.) EXTENSION NECKS FOR DEEPER INVERT CAN BE PROVIDED IN 0.5m INCREMENTS FOR ON SITE ASSEMBLY. PLEASE ASK OUR SALES DEPARTMENT FOR FURTHER DETAILS.
- 4.) ALL UNITS REQUIRE APPROPRIATE COVER AND FRAME TO SUIT APPLIED LOADINGS.
- 5.) THIS DRAWING SHOULD BE USED FOR DIMENSIONAL INFORMATION ONLY. IT IS ESSENTIAL THAT THIS DRAWING IS READ IN CONJUNCTION WITH THE INSTALLATION GUIDELINES SUPPLIED WITH THE UNIT (COPIES ARE AVAILABLE FROM OUR SALES DEPARTMENT).
- 6.) STANDARD PIPE ORIENTATION SHOWN. FOR OTHER AVAILABLE OPTIONS PLEASE CONTACT OUR SALES DEPARTMENT.
- 7.) AN Ø82mm SOCKET IS SUPPLIED TO HOUSE AN OIL ALARM PROBE.



| Description             | Drawn | Date     | Rev. |
|-------------------------|-------|----------|------|
| GREEN ROOF DETAIL ADDED | SW    | 02.10.19 | P3   |
| ISSUED FOR PLANNING     | ES    | 08.07.19 | P2   |
| INITIAL ISSUE.          | ES    | 30.04.19 | P1   |

Client:  
**COSGRAVE DEVELOPMENTS.**

Project:  
**BLACKWOOD SQUARE, NORTHWOOD, D9**

Clients Representative:  
**J. B. Barry and Partners Limited Consulting Engineers**  
Classon House, Dundrum Business Park, Dundrum Road, Dublin 14  
Tel: +353 1 485 1400, email: info@jbbarry.ie, web: www.jbbarry.ie

|                              |                  |
|------------------------------|------------------|
| Drawn By: ES                 | Date: APRIL 2019 |
| Checked By: GF               | Date: APRIL 2019 |
| Approved By: GF              | Date: APRIL 2019 |
| Internal Project Ref: Y19205 | Stage: PLANNING  |

Drawing Title:  
**PROPOSED SUDS DEVICES DETAILS**

|   |         |
|---|---------|
| Drawing No.: 19205-JBB-00-XX-DR-C-01007 | Rev: P3 |
|---|---------|